

## Historic, archived document

Do not assume content reflects current scientific knowledge, policies, or practices.



ESTABLISHED 1840.

---

SUPPLEMENTARY CATALOGUE

OF

RARE AND CHOICE TREES,

SHRUBS, PLANTS AND ROSES.

INCLUDING

SEVERAL VALUABLE NOVELTIES AND MANY SPECIALTIES  
OF SUPERIOR MERIT.

CULTIVATED AND FOR SALE AT THE

MOUNT HOPE NURSERIES,

ROCHESTER, N. Y.

---

ELLWANGER & BARRY,

PROPRIETORS.

---

1895.

THE POST EXPRESS PRINTING CO.  
ROCHESTER, N. Y.



*Dwarf Evergreens.*

*Magnolia Macrophylla.*

*Cut-Leaved Birch.*

*Nordmann's Fir.*

A VIEW IN THE GROUNDS OF THE MOUNT HOPE NURSERIES.



### Timely Suggestions to Intending Purchasers.

The edition of our General Catalogue, published a year ago, is so complete and we find so few changes necessary, that we have concluded not to publish a new edition this year, but to issue a Supplementary List in which a few reductions in price are noted, some novelties of conspicuous merit are mentioned prominently, and special attention is directed to many good things, not exactly new, but of such importance and value as to deserve the careful consideration of every intending purchaser. Attention is also especially directed to the excellence of the illustrations in this Catalogue, which are from photographs of specimens growing in our Nurseries.

In all of the departments of our Nurseries we keep our collections fully up to the times by securing, at home and abroad, all that is meritorious, and by rejecting, after careful trial, whatever has proved to be unworthy of propagation and dissemination.

Our long business experience (over fifty years), complete experiment orchard, extensive nursery grounds, and large force of skilled assistants, together with exceptional facilities for handling, packing and shipping, place us in a position to do full justice to all who favor us with their orders.

It affords us pleasure to announce that our stock for the current season is unusually large, well-grown and thrifty, and assortments full and complete.

Everyone who contemplates planting, either on a large or small scale, is requested to send for our General Catalogue, consisting of 160 pages, embellished with numerous engravings of the most popular trees, etc. It contains, besides accurate descriptions of the best varieties of fruit and ornamental trees, etc., plain and practical cultural directions, and forms a convenient hand-book, which every owner of property should possess for ready reference. It will be mailed free on application.

Superintendents of Parks, Public Grounds, Cemeteries, and Landscape Gardeners will find our extensive and varied collections specially adapted to their purposes.

We grow an immense stock and will make special prices to purchasers of large quantities. Estimates of cost will be cheerfully furnished on request.

FRUITS, NEW AND OLD.—We offer for sale the most complete and varied assortment of fruits in the United States and adapted to a great variety of soils and climates. We pack in such a manner that the goods can be shipped with safety to the most distant parts of this and foreign countries.

We publish a catalogue of Pot-Grown Strawberry Plants and Holland Bulbs in July, and all who desire anything in this line are requested to send for this publication when it is issued.

EARLY ORDERS.—Although this list will reach you before planting time, nevertheless, it is well to plan and prepare in advance, and as orders are filled in rotation, buyers will find it to their advantage to send in their lists as early as possible.

### The Packing Season.

The Spring packing and shipping season usually opens here about the 1st of April, and continues into the month of May. The planting season is not regulated by any particular month or day, nor by the state of vegetation where the planting is to be done, but *by the condition of the trees to be planted*. Hence, trees can be sent with safety from Rochester to localities several degrees south, even if they do not arrive until the ordinary transplanting season in that locality has passed. In the Autumn, we usually commence digging and packing the first week in October and continue until the freezing of the ground, say middle to end of November.

### Twenty Per Cent. Reduction in Express Rates.

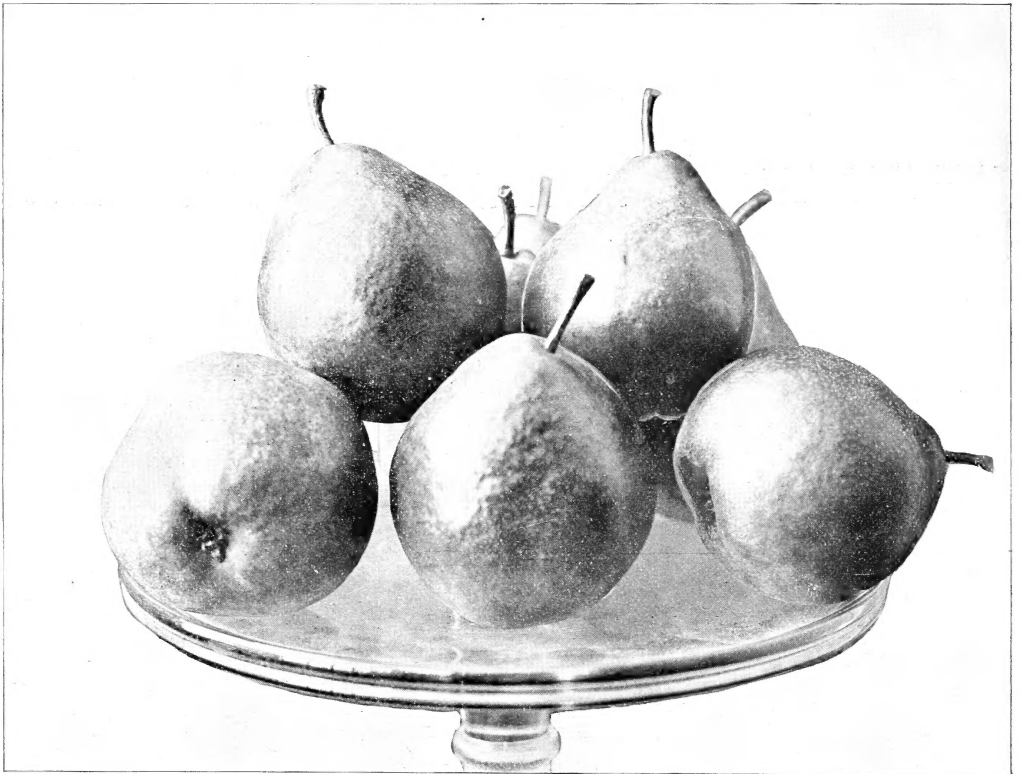
We are pleased to announce that we have secured from the Express companies a reduction of 20 per cent. on *Trees* and *Plants*, and our customers will therefore enjoy the benefit of the same.

### **New Seedling Apple, "Barry."**

We take great pleasure in now offering for the first time this fine new seedling Apple. It was raised in our nurseries several years ago and has been thoroughly tested, so that we have no hesitation in recommending it to our customers as a novelty of sterling merit. Fruit oblate conical, yellow ground marbled with carmine on sunny side; flesh firm, crisp, acid; quality good. A great keeper, lasting in perfection till June. Tree a vigorous grower. \$1.00.

### **New Winter Pear, "Dorset."**

A seedling raised by the late Lemuel Clapp, and now offered for the first time. It is a very handsome and showy late keeping Pear. Large, golden yellow ground, with bright red on sunny side; flesh juicy, melting, sweet, of good quality. Keeps and ships well and is a valuable late Pear. Ripe in February. Tree a vigorous grower. \$1.00.



NEW WINTER PEAR, "DORSET." (Reduced.)

### **New Fall Pear, "Lady Clapp."**

Another seedling raised by the late Lemuel Clapp. A large, very handsome Pear. Clean, smooth skin, beautiful yellow when ripe; flesh very juicy, melting, vinous; quality first rate. Ripens from middle to end of September, following the Bartlett, and a good sort to succeed that variety on account of its size and fine color, which is the same as Bartlett. A splendid pear and a decided acquisition to the list of varieties ripening at that season. Tree a good grower. \$1.00.

### **The Col. Wilder Pear.**

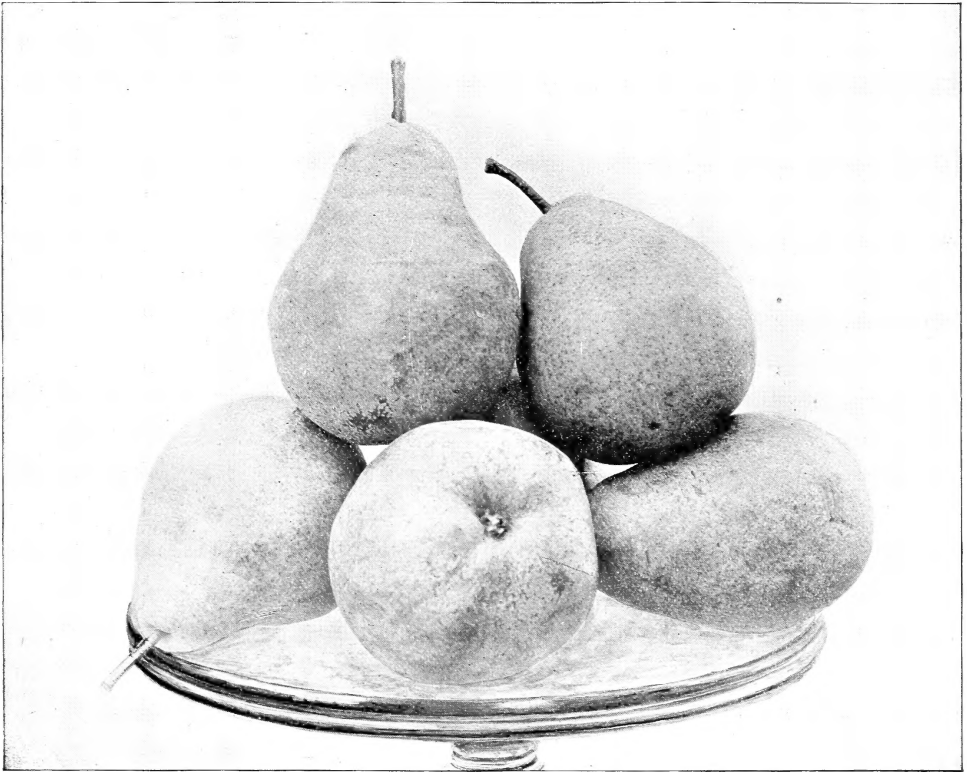
One of Fox's seedlings from California; one of the longest keeping Pears. Large, pyriform, oblong, inclining to oval; skin yellow, profusely dotted and marbled with russet; flesh melting, full of juice, sweet; a delicious Pear; keeps till March. A fair grower. \$1.00.

### The B. S. Fox Pear.

Another of Fox's seedlings from California. May be compared as to texture and quality with Anjou, but ripening in October. Stem short; color a beautiful yellow russet when ripe; flesh fine grained, very juicy, vinous; sound to the core. One of the most valuable introductions of recent years. \$1.00.

### The P. Barry Pear.

Another of the long-keeping Fox seedlings. Large, pyriform; skin orange yellow, covered with russet dots and blotches; flesh very juicy, buttery, fine grained; flavor sprightly, rich, excellent. The best late Winter Pear. Resembles Anjou in texture of flesh and Winter Nelis in color of skin and juiciness of flesh. Tree a poor grower and must be top-grafted. Ripe in April. We exhibited fine specimens of this Pear at the World's Fair latter part of May. \$1.00.



NEW FALL PEAR, "LADY CLAPP." (Reduced.)

### The Grand Duke Plum.

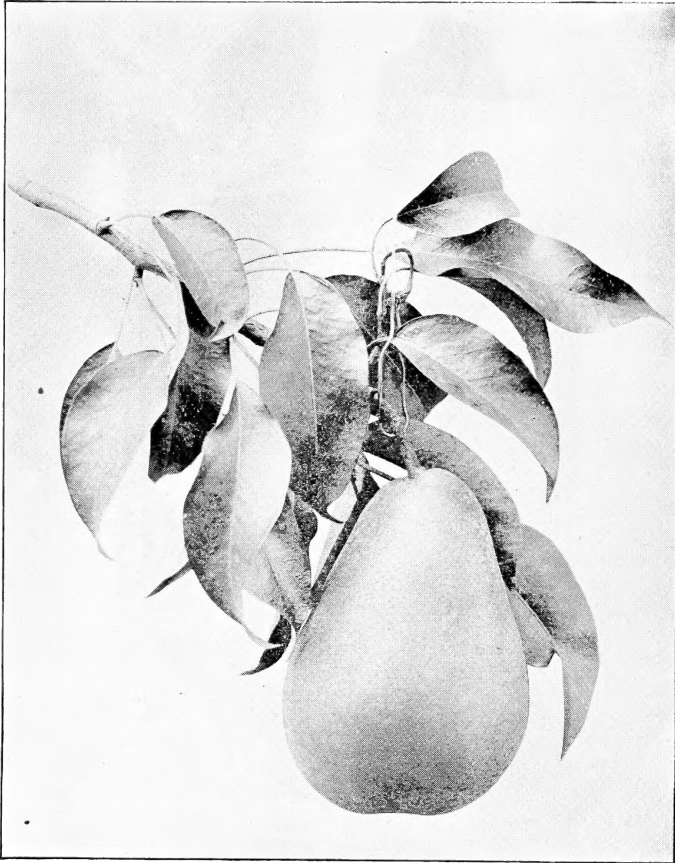
This magnificent Plum was introduced from England a few years ago, and has been carefully tested in our experiment orchard. It has proved so valuable with us, that we have no hesitation in pronouncing it one of the very best late Plums for market. Fruit very large, egg-shaped, dark purple; flesh yellow, adheres to the stone, quality good. Ripens latter part of September. \$1.00.

### The Windsor Cherry.

One of our introductions, and a variety which cannot be commended too highly. It is large, black, very firm, and of fine quality, ripening late. We consider this one of the best fruits we have brought to notice. 50c.

### The Columbus Gooseberry.

This is one of the most valuable introductions of recent years in small fruits, and it fully sustains the high opinion first formed of it, as will be seen from the reports given below from high and competent authority. It was introduced by us a few years ago. The fruit is of largest size, handsome, of a greenish yellow color, and the quality is excellent. The plant is vigorous and productive and does not mildew. It merits a place in every garden. 50 cents each, \$4 per doz.



THE P. BARRY PEAR. (Reduced)

The *Editor of the Rural New Yorker* says: "It is the *best* variety yet introduced and seems close to a perfect Gooseberry for our climate."

Again, in the issue of the same paper, July 21, 1894, he says: "There seems little to be said that has not already been said respecting Gooseberries at the Rural Grounds. Columbus is, this season, all that it was last. We have three bushes all laden—overladen—with large, smooth berries, as large as the average foreign kinds. There is not a trace of mildew upon either fruit or foliage, and the Columbus seems to us this year, as last, the best variety in the market for those with whom the foreign kinds do not thrive."

#### THE COLUMBUS IN CANADA.

From the *Canadian Horticulturist*, January, 1895:

A correspondent writes: "I planted this variety in the Spring of 1893. They fruited that year, just enough to show the form and quality. This year the bushes were heavily loaded, and the fruit was of the best quality, very large in size, oval in shape quite smooth and greenish yellow in color. It is greatly superior to the Industry. No trace of mildew, and a most abundant bearer."



A YOUNG BEARING TREE OF THE GRAND DUKE PLUM IN OUR EXPERIMENT ORCHARD.



A BRANCH OF THE GRAND DUKE PLUM. (Reduced.)

The very latest report on Columbus from the *Rural New Yorker* Dec. 22, 1894:

"The *Rural New Yorker*, which reported from its trial two years ago that the Columbus was the largest Gooseberry in cultivation not materially affected with mildew, has been watching for other reports in confirmation or contradiction of its estimate. We find in a late number of our sprightly contemporary, *Farm and Fireside*, a report from our friend, Mr. T. Greiner, which, in so far as it goes, quite supports all the good things we have said of the Columbus: 'This year I fruited the Columbus for the first time. The plant is a vigorous grower, and the foliage apparently healthy to a more than ordinary degree. The fruit is the largest I have ever been able to grow in this country, and I think equal in size and flavor to any English variety. Indeed, if it is not an English or half-English variety (as I believe), the Columbus is probably the best, by far, of any of our American sorts, and makes all experimenting with the true English sorts practically superfluous.' We are always timid about praising any new sort of fruit that we have taken pains to secure and try as soon as possible, as the best of its kind. Truly, indeed, the opportunity has seldom enough occurred among the hundreds of novelties tried each year for nearly twenty years. Well, the Columbus was one of the novelties that proved the rule-breaker. It is the only variety of foreign Gooseberry thus far introduced and tried at the Rural Grounds that does not mildew, either as to leaf or berry. The berry is as large as the average of foreign varieties—as large as desirable, it seems to us—and the plant is as productive as it is desirable it should be."

### The Winchell Grape.

The earliest White Grape (*identical with Green Mountain*.) This new White Grape has been thoroughly tested for several years in our vineyard, and it has proved so satisfactory in all respects that we can recommend it with the utmost confidence to our customers. It combines hardiness, fruitfulness, vigor, good size and excellent quality.

Though not the largest, yet, both berry and cluster are of good size, and the flavor is excellent, ranking in this respect as a grape of the first class. In time of ripening it may be described as very early, being the first White Grape to ripen, and maturing about the same time as Champion, or about a week earlier than the Hartford. This qualification insures its ripening even in the worst of seasons, a consideration which will be appreciated by all planters. Its habit of growth is vigorous and the foliage clean and healthy, while its bearing quality is all that can be desired. It can be said to be a most valuable White Grape, either

for the amateur or professional grower, and there is every reason to believe that it is destined to wide-spread popularity. We think from what we have seen of it in the past seven years, that it is one of the few Grapes adapted to general cultivation, and of especial value for the amateur, while its earliness, productiveness and vigor, combined with fine quality, in our opinion render it also very desirable for market. 1 year, 50c. each; 2 years, 75c. each.



THE WINCHELL GRAPE. (Reduced.)

#### **The Champlain Raspberry.**

This valuable new Yellow Raspberry originated in Vermont. Yellow Raspberries of good quality have heretofore not been sufficiently hardy to withstand severe Winters. Brinckle's Orange, the best Yellow Raspberry in cultivation, is rather tender and requires protection. The Champlain, coming from the cold regions about Lake Champlain, is destined to supply this want, and we can offer it with confidence, believing it to be the best Yellow Raspberry of good quality that is hardy. The fruit is medium to large; color a beautiful light yellow; in quality ranks as best, and is superior to Caroline or Golden Queen. Plant a strong grower, prolific and very hardy. 75c. per doz.

#### **The Loudon Raspberry.**

A new Red Raspberry which originated at Janesville, Wis. Described as follows: "Said to be a seedling of the Turner crossed with Cuthbert. Large, broadly conical, beautiful red. Ripens about with Cuthbert, continuing later, and in quality fully as good as that variety." 50c. each; \$5 per doz.

#### **The Columbian Raspberry.**

A new variety, described as follows: "Very large, dark red bordering on purple; very hardy and wonderfully productive." 50c. each; \$5 per doz.



### The Miller Raspberry.

A variety from New Jersey which comes highly recommended. Described as follows: "Berry as large as Cuthbert, round, bright red, does not fade; very firm; flavor rich. Begins to ripen with the earliest. Very prolific and perfectly hardy." 50c. each; \$4 per doz.

### The Superlative Raspberry.

A splendid new foreign Red Raspberry. Very large, fine color, firm and of best quality. We have tested it in our grounds, and commend it to all who desire the *largest, handsomest, and choicest fruit*. One of the best novelties in this line. 50c. each; \$4 per doz.

### The Brandywine Strawberry.

Originated at West Chester, Pa. Described as follows: "Of immense size and fine quality; quite firm and shapely for so large a berry. Season medium to late." \$1 per doz.

The editor of the *Rural New Yorker* considers it the best variety in the collection at the Rural Experiment Grounds.



*Prunus Pissardi.*      *Clump of Magnolias.*

A CORNER IN THE GROUNDS OF THE MT. HOPE NURSERIES.

### Dark Purple-Leaved Beech (Major).

This is a variety of the Purple-leaved Beech which we esteem highly. Foliage very dark purple—darker than Rivers', and glossy. An erect, rapid grower, and one of the most desirable lawn trees. \$2.00.

### Japan Weeping Rose-Flowered Cherry.

Among trees of drooping habit there is none more beautiful than the one represented by the illustration. The beauty of the tree consists not only in its graceful, pendulous habit, but it has, besides, the merit of producing quantities of flowers in the blossoming season, and the branches when covered with these give the tree a novel, interesting and charming effect, as will be seen from the picture. The foliage of the tree, too, is handsome. This tree is well suited for either large or small places, and should be planted by itself, where it can have room to develop. By



cutting, it can be confined to a small space, and if permitted to grow it will cover considerable ground in the course of time. No drooping tree of recent introduction has more merits than this. It was brought from Japan by Von Siebold. \$1.50.



DARK PURPLE-LEAVED BEECH.

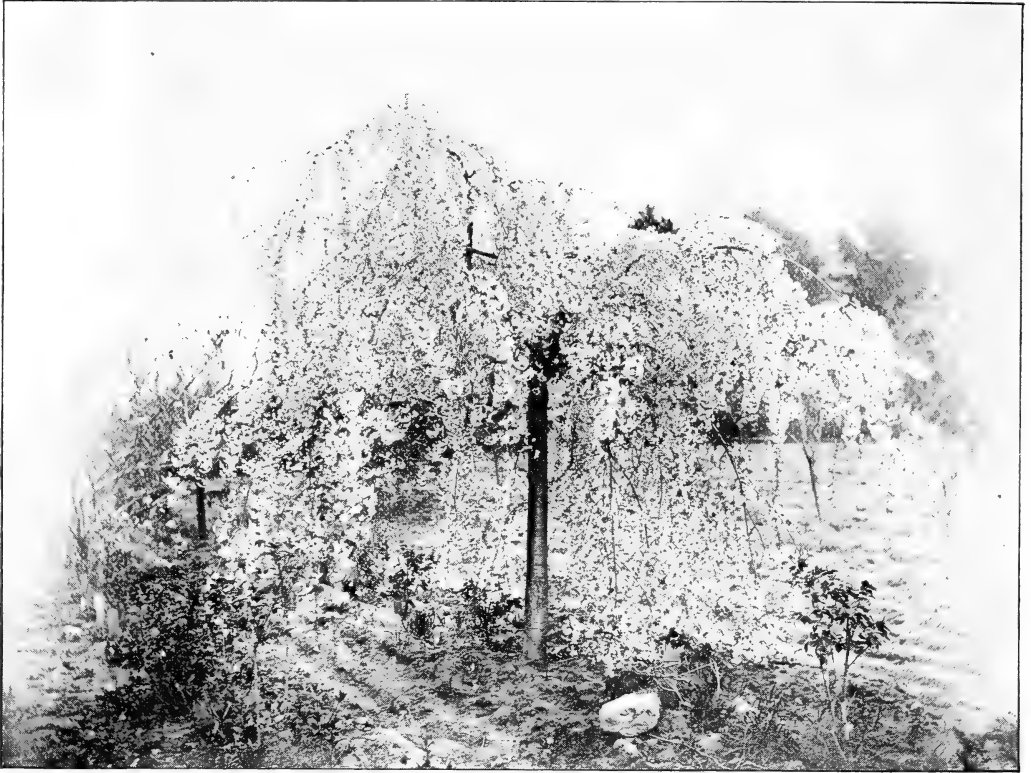
### **Magnolias.**

Their superior stateliness of form and splendor of growth, the size and richness of their foliage and lavish yield of fragrant flowers, all tend to place them in the foremost rank among hardy ornamental trees and shrubs. Their proper place is on the lawn, where they show to fine advantage in contrast to the green; or they may be planted effectively on the borders of lawns, with an evergreen in the background to heighten the contrast. Planted in groups, they yield to no rival, and their effect in the early Spring is grand beyond description, illuminating the whole landscape and filling the atmosphere with their rich perfume.

To insure success in their transplanting, they should be moved in the Spring, never in the Fall, and the Chinese varieties at that period when they are coming into bloom, and, consequently,

before the leaves have made their appearance. Great care should be exercised in their removal, the fibrous roots being preserved as nearly as possible, and carefully guarded from any exposure to wind or sun. While almost any good soil is sufficient to insure their growth, they succeed best in a soil which is warm, rich and dry.

We now grow our Magnolias in pots and ship with the ball of earth attached, which ensures successful transplanting. We have all the best varieties, descriptions of which will be found in the General Catalogue.



JAPAN WEEPING ROSE-FLOWERED CHERRY.

✓ **Hall's Star-Shaped Magnolia.**

(*Magnolia Stellata* syn. *Halliana*.)

The earliest to flower and the prettiest of all the Magnolias. Of dwarf habit, producing its pure white, star-shaped, semi-double flowers in April, before the leaves appear. A charming variety. \$2.00.

**Japanese Maples.**

These are rare and beautiful colored-leaved trees of medium size, specially adapted for embellishing grounds of small extent, where the larger deciduous trees with colored foliage would not be admissible for lack of room to develop. Their growth is comparatively slow, and they form in time low shrubs or trees, with the branches more or less spreading and covered with beautiful and attractive colored and finely divided foliage. An impression has prevailed that these beautiful trees are somewhat tender for our climate, but as we have had them growing successfully in our nurseries for some years, we can confidently recommend them to our patrons



HALL'S STAR-SHAPED MAGNOLIA.

(*Magnolia Stellata.*)

as the most beautiful small trees that are known for ornamental planting. They succeed best in sheltered positions, and should receive some protection for two or three years after being planted, until well established. Grown in pots, they can be employed to good advantage for the decoration of the conservatory. See General Catalogue for varieties.



BLOOD-LEAVED JAPANESE MAPLE.

✓ **Weeping Russian Mulberry.**

A beautiful new weeping tree. Forms a perfect umbrella-shaped head, with long slender branches drooping gracefully to the ground, parallel to the stem. Remarkable for its rapid growth, thus becoming an effective tree the first year after being planted. [A very desirable ornamental tree for grounds of small extent. \$1.00.

**Golden-Leaved Oak.**

With orange yellow leaves, which retain their golden tint throughout the season; one of the finest golden-leaved trees. The effect produced by planting with purple-leaved trees is very striking. \$1.50.

**Dampierre's Golden Elm.**

A charming novelty; foliage of a bright golden color, center of the leaf yellowish green; very pretty and attractive. \$1.00.

"Your trees sent to Gmunden, Austria, [are doing] first; rate—all of them."—POULTNEY BIGELOW, *Reform Club, London.*

### **New American Weeping Willow.**

This is not a new variety, as its name might imply, but is called new to distinguish it from the older and more common kinds of Willows. It is a beautiful tree and has not received the recognition it deserves. It is a dwarf species, but when grafted five or six feet high, throws out long slender branches, which make it one of the most ornamental of small weeping trees. \$1.00.



WEeping RUSSIAN MULBERRY.

### **Rosemary-Leaved Willow.**

One of the prettiest round-headed small trees; branches feathery, foliage silvery. Deserving of more attention than it has hitherto received. 75c.

### **Russian Golden Willow.**

A rare and valuable variety, particularly attractive in Winter, on account of its bright golden bark. 75c.

### **Siebold's Willow.**

A tree of elegant habit, with long graceful branches, and narrow deep green leaves. 50c.

### Colorado Blue Spruce.

(*Abies Pungens.*)

This noble tree is a native of the Rocky Mountains and is unquestionably one of the finest evergreens. Foliage steel blue or sage color, in marked contrast to the green of other trees. One of the hardiest and most beautiful of all the Spruces. Trees 2 feet in height \$3 each.



COLORADO BLUE SPRUCE.

#### Conical Spruce.

A dwarf variety of Norway Spruce of compact conical habit; becomes perfectly symmetrical without pruning. One of the choicest evergreens. \$1.50.

#### Pyramidal Arbor Vitæ.

One of the best of the Arbor Vitæ. Of upright, compact growth, and, as its name implies, pyramidal in form, resembling in this respect an Irish Juniper. \$1.00.

#### Swiss Stone Pine.

A handsome and distinct European species, of compact, conical form; foliage short and silvery. Grows slowly when young. \$1.00.

**Thunberg's Barberry.***(Berberis Thunbergii.)*

A beautiful dwarf compact shrub, with small foliage of a rich green, turning to a beautiful coppery red in Autumn. Extensively employed for color effects in Autumn both in groups, or singly on the lawn. 50c.



DEUTZIA GRACILIS.

**Slender-Branched Deutzia.***(Gracilis.)*

One of the prettiest dwarf flowering shrubs. Flowers pure white, appearing in June. Fine for pot culture. 35c.

**Rough-Leaved Deutzia (True).***(Scabra.)*

This is the true variety, and is a pretty shrub of dwarf habit; flowers white, bell-shaped, in small bunches; foliage oval, very rough underneath. 50c.

**Elæagnus Longipes.***A rare and beautiful Japanese Shrub.*

This is a remarkably beautiful new shrub from Japan. In July the plant is covered with bright red berries of large size and edible, the flavor being pungent and agreeable. Laden with fruit the bush is highly ornamental, and the fact that its leaves remain fresh till late in the Autumn gives it additional value for garden decoration. We regard it as the coming shrub, destined to wide-spread popularity as soon as known. 50c.

**Spæth's Golden Variegated Dogwood.**

A beautiful new shrub, the foliage of which is broadly margined with yellow, rendering it very conspicuous. The wood is of deep red color. 75c.

**Euonymus Erectus.**

A compact, upright growing variety, of dwarf habit, resembling in form an Irish Juniper. 50c.

✓ **New Ligustrum, or Privet, "Ibota."**

A valuable new shrub, native of China and Japan. Flowers large, white, very fragrant, produced in great profusion; leaves long and shining; one of the hardiest of the Privets and distinct. A charming shrub which will be prized for its fragrant flowers, as well as for its handsome foliage. 50c.



ELÆAGNUS LONGIPES—SPRAY OF FRUIT.

**Hydrangea Paniculata Grandiflora.**

Not a new shrub, but one that cannot fail to give the greatest satisfaction wherever planted. Grows from eight to ten feet in height, producing in great profusion immense pyramidal panicles a foot and over in length of white flowers which change to pink as the season advances. The flowers are produced in August and September, when very few shrubs are in flower. A single shrub planted on the lawn and kept in shape by judicious pruning is a marvel of beauty, but the finest effect is produced by planting it in beds or masses—twelve, twenty-five, fifty, or even one hundred together. The only variety that is perfectly hardy. 35c.

**Hydrangea Red Branched.**

Introduced by us. A very free bloomer, producing large and magnificently formed trusses of deep rose-colored flowers from every shoot; half-hardy. One of the best varieties for forcing and pot culture. 25c.



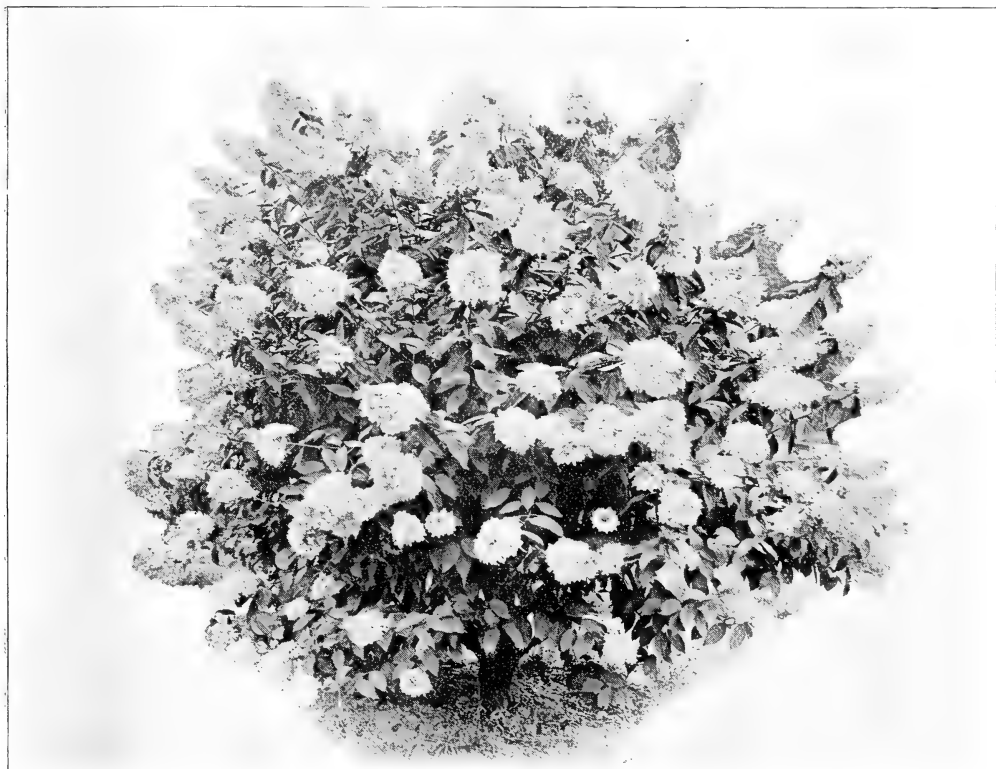
**Hydrangea White Fringed.**

Large, pure white flowers, with the edge of the petals beautifully fringed. For culture in pots or tubs. Not hardy. 50c.

**Japan Tree Lilac.**

(*Syringa Japonica.*)

A remarkable new species from Japan, becoming a good sized tree. Foliage dark green, glossy and leathery. Flowers small, feathery, in great panicles; light straw color, odorless. Blooms a month later than other Lilacs. \$1.00.



SINGLE PLANT OF HYDRANGEA PANICULATA GRANDIFLORA. (Reduced.)

*Over 200 blooms were on this plant in 1894.*

**Lilac Villosa.**

Another new species from Japan. Large branching panicles; flowers light purple in bud, creamy white when open. Foliage resembles that of the White Fringe. Very distinct and especially valuable, as its flowers appear fully two weeks after those of other Lilacs. \$1.00.

**New Lilacs—Lemoine's Great Novelties.**

Double flowered and single flowered, the latest introductions of the celebrated French raiser, Lemoine. We have taken great pains to secure the choicest of his collection, and can now offer fine plants of these great novelties. We advise every one of our patrons to secure these acquisitions, the most remarkable and valuable additions to the list of hardy flowering shrubs made in many years. See General Catalogue. Our general collection of Lilacs is undoubtedly the largest in this country and contains upwards of 80 varieties.

### Purple-Leaved Plum.

The finest purple-leaved small tree or shrub of recent introduction. The young branches are a very dark purple; the leaves when young are lustrous crimson, changing to a dark purple, and retain this beautiful tint till they drop late in Autumn. No other purple-leaved tree or shrub retains its color till late in the Fall like this. It transplants easily and is worthy of wide dissemination. Flowers small, white, single, covering the tree. A recently introduced shrub of great merit. 50c.



JAPAN TREE LILAC.

### Golden Elder.

A handsome, vigorous, rapid growing variety, with golden yellow foliage, the brilliancy of which is retained throughout the season. A valuable plant for enlivening shrubberies. 50c.

### Japan Snowball.

Of moderate growth; handsome, plicated leaves, globular heads of pure white neutral flowers early in June. It surpasses the common variety in several respects. Its habit is better, foliage much handsomer, flowers whiter and more delicate. One of the most valuable flowering shrubs. 75c.

**New Clematis, Mme. Edward Andre.**

Flowers large, of a beautiful bright velvety red; free flowering and continuous bloomer. \$2.00.

We have a limited supply of the superb double white varieties, *Duchess of Edinburg* and *Fortunei*, extra strong plants. \$2.00.



LILAC VILLOSA.

**Hall's Japan Honeysuckle.**

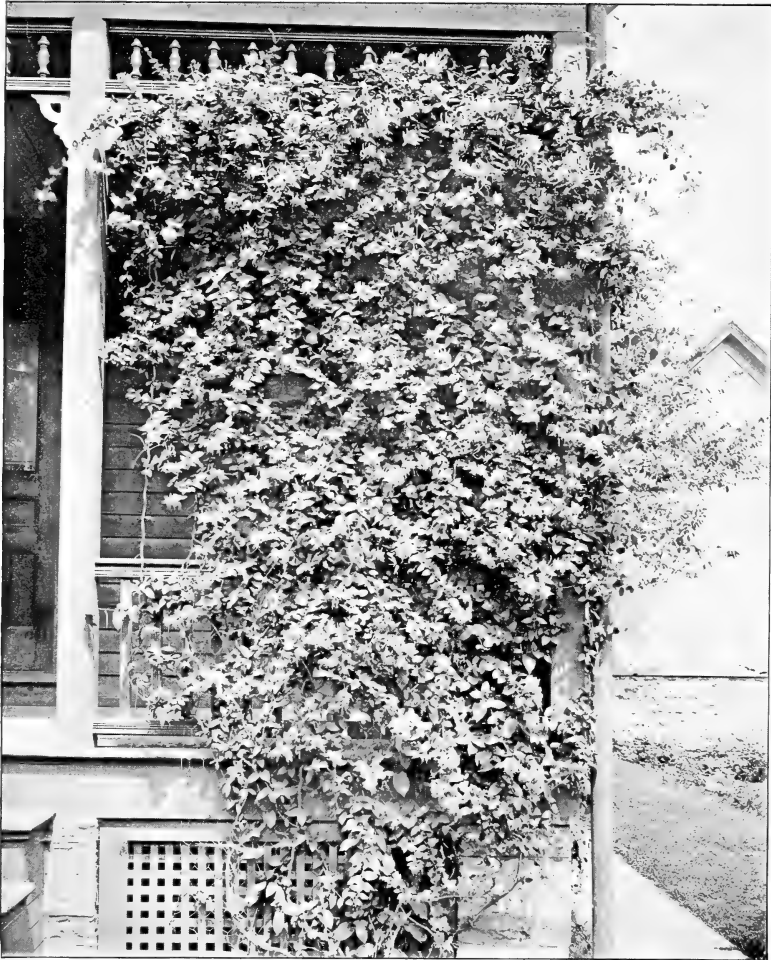
Without doubt the best and most popular of all the climbing honeysuckles. A strong, vigorous, almost evergreen sort, with pure white flowers changing to yellow. Highly fragrant, and covered with flowers from July to December; holds its foliage till January. The best bloomer of all. 35c.

**Hardy Herbaceous Pæonies.**

It is surprising that so noble a flower, almost rivalling the Rose in brilliancy of color and perfection of bloom and the Rhododendron in stately growth, should be so neglected. The first point in its favor is hardiness. In the severest climate, it requires little if any protection. Its vigorous habit and healthy growth, freedom from all diseases and insects, are important arguments in favor of its cultivation. Each succeeding year adds to its size and beauty. The foliage is rich and glossy and of a beautiful deep green color, thus rendering the plants very ornamental even when out of flower. No other flower is so well adapted for large, showy bouquets. The Pæony may be planted either singly on the lawn or in borders. Where the lawn is extensive a large bed makes a grand show. Our collection has been made with great care and includes the best and most distinct varieties. See General Catalogue for complete list.

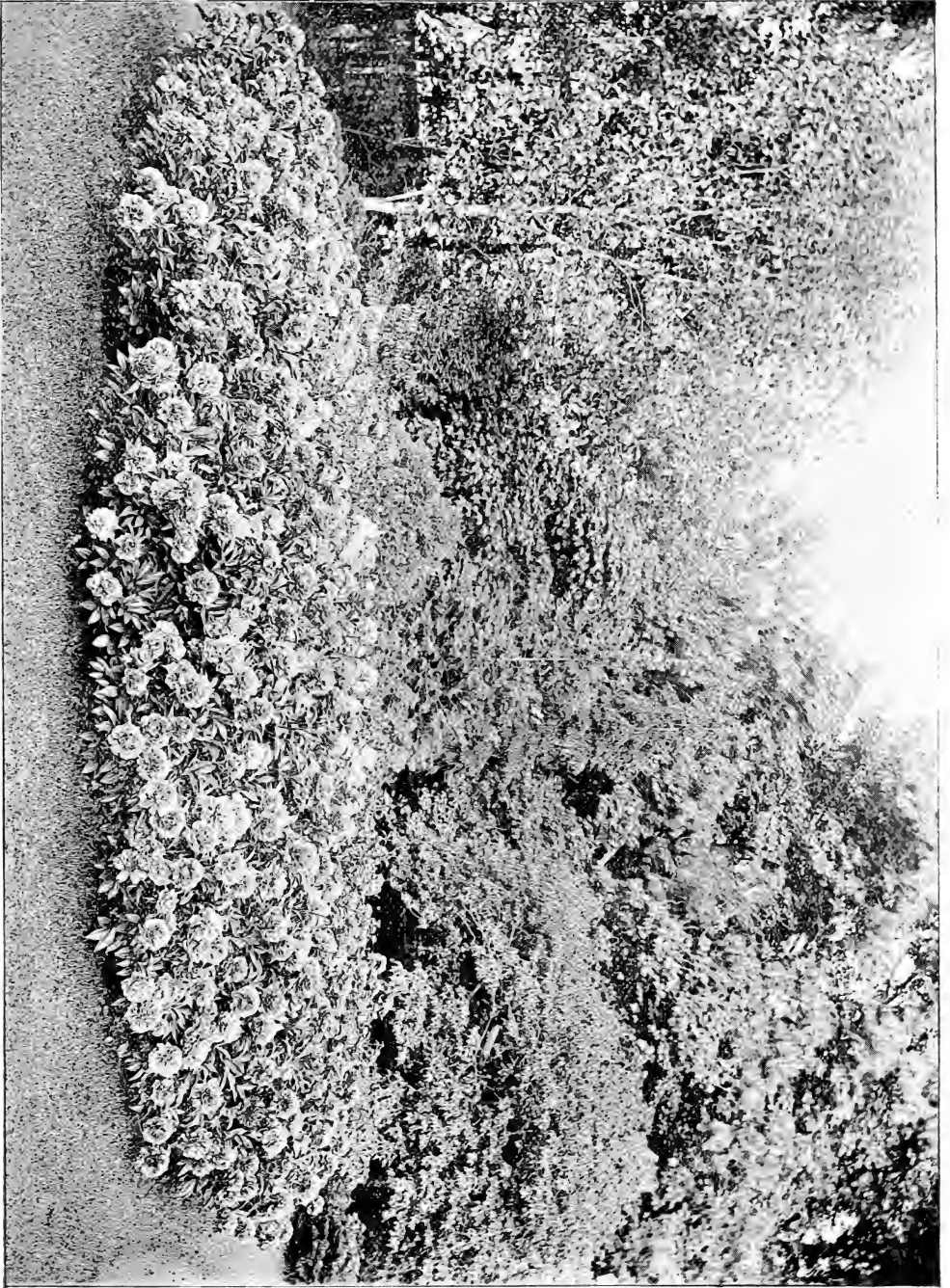
### Select Hardy Phlox.

One of the finest Autumn flowers. It is of vigorous habit, easy culture, and produces in great profusion during a long season, flowers of fine form and substance, and of bright and varied colors. Just as the Roses are fading, the Phlox puts forth her first flowers, producing a fine succession of bloom, and prolonging an interesting season at least six weeks. As regards their culture, it may be briefly stated that they succeed in any good garden soil, but they are greatly improved by being liberally manured, and an occasional supply of liquid manure during the growing season will greatly increase the size of their trusses. When in flower they should be watered freely every evening. The Phlox usually flowers in July and August, and in order to render it



HALL'S HONEYSUCKLE.

Autumnal flowering, it is necessary to pinch the shoots about the first of June, and again in July. The plants will then flower in September. For early flowers some of the plants may be left unpinched. When two years old the finest trusses are produced. The third year the plants flower tolerably well, but they will not keep thrifty and healthy after that. The old plants should then be lifted in the Fall, divided and transplanted. But the better plan is to keep up a succession of young plants from cuttings by securing a fresh collection every year. We annually introduce all new and desirable varieties of home and foreign production. Our collection contains the best productions of the celebrated French raiser, Lemoine. See General Catalogue.



A BED OF HERBACEOUS PEONIES ON THE LAWN AT THE MT. HOPE NURSERIES.

### Fragrant Yellow Day Lily.

(*Hemerocallis flava*.)

A plant which can hardly be equalled for the garden, while the cut blooms are invaluable for house decoration. We take great pleasure in directing special attention of flower lovers to this old fashioned plant, but still one of the most desirable. It should be in every garden large or small, and it should be planted in clumps and groups and abundantly, as one cannot have too many of its flowers. The delicacy of its coloring and fragrance, render it conspicuous among all garden plants. 25c.



A SINGLE TRUSS OF HARDY PHLOX. (Reduced.)

### The Iris, or Fleur de Lis.

The Iris, or *Fleur de Lis* is rapidly becoming a very popular flower, and justly so, for its flowers are large, showy and of beautiful shades of color, while the habit of the plant is such as to make it very valuable for effective planting on the edges of groups or borders. We have a choice collection embracing the best sorts. See General Catalogue.





GRASS WALK AT THE MT. HOPE NURSERIES, SHOWING LARGE BED OF FRAGRANT YELLOW DAY LILY IN FLOWER.

### The Wonderful New Rose, Crimson Rambler.

*"300 Blooms on One Shoot."*

This superb novelty is of the Polyantha class and was originally received from Japan.

The plant is of very vigorous growth, making shoots from eight to ten feet during the season, rendering it a charming pillar Rose. It is also magnificent in bush form, and for covering buildings, trellises, etc., it cannot be excelled. One of the striking characteristics of this Rose is its remarkable color, which is of the brightest crimson, and which remains undimmed to the end, showing none of the objectionable purplish tint so common in crimson roses.

The flowers are produced in great pyramidal panicles or trusses, each carrying from thirty to forty blooms, the individual flowers measuring about one to one and a half inches in diameter and remaining perfect on the plant for upwards of two weeks with their freshness of color unimpaired. The foliage is bright green and glossy, and contrasts finely with the bright crimson of the flowers. It is said to be exceedingly hardy, having successfully withstood the test in exposed situations of two very severe Winters in England. We have not had an opportunity to test its hardiness here, but from all appearances we think it is. As a decorative pot plant it cannot be excelled. We can recommend this novelty in the strongest manner as being a new Rose of great importance and value.

This rose received Gold Medals from the National Rose Society of England, and the National Horticultural Society of France, the International Horticultural Exposition at Earl's Court, as well as numerous first-class certificates.

#### OPINIONS OF THE ENGLISH PRESS:

"The most beautiful hardy Rose of its kind introduced for many years. It was inevitable that a gold medal would be given to the beautiful Polyantha Rose, "Crimson Rambler."—*Gardeners' Chronicle, London, Eng.*



NEW ROSE, "CRIMSON RAMBLER."

*From a photograph of flowers produced at the Mount Hope Nurseries.*

"This fine Rose will make its mark as a garden variety."—*Garden, London, Eng.*

"Of the many fine garden Roses introduced during the past ten years there is not one of greater importance or likely to prove more valuable than "Crimson Rambler." \* \* \* The great pyramidal trusses of glowing crimson flowers produced an effect almost startling in its brilliancy. Awarded a gold medal at the International Horticultural Exhibition, Earl's Court, a certificate being regarded by the judges as wholly inadequate to indicate the merits of the variety."—*Gardeners' Magazine, London, Eng.*

"One of the best Roses of its kind produced for many a long day. No more successful novelty has been introduced this year, and it was deservedly given a gold medal."—*Daily Telegraph, London.*

"One of the most striking things in the show."—*Pall Mall Gazette, London.*

"Mr. Turner ought to be a proud man, for he has been publicly complimented about his beautiful Rose, "Crimson Rambler," by that enlightened and cultured monarch, the King of the Belgians."—*Gardeners' Magazine, June 2, 1894.*

The *Gardeners' Magazine* of June 9th, 1894, in an article on the effect of the frosts of May upon the Roses, says: "Frost has done an enormous amount of damage to Roses; all early buds are destroyed, but "Crimson Rambler" is uninjured."

300 BLOOMS ON ONE SHOOT OF "CRIMSON RAMBLER."

A correspondent of the *London Garden* writes in the issue of July 14, 1894:

"With me at this date (July 6th) this Rose is grand. I have a dozen large plants on prepared land on turf. I did not prune much, merely shortening back and placing stakes to support the long growths. I gave a liberal mulch early in the Spring, with the result that the growths are very strong, and the clusters of bright crimson flowers at this date beautiful. On one shoot alone I counted over 300 blooms."

Price, fine healthy plants, 35c. each, 3 for \$1.00.



**New White Hybrid Perpetual Rose, "Margaret Dickson."**

We have had this superb Rose growing in our nurseries for several seasons, and from what we have seen of it, there seems to be no doubt that it will be the coming white hardy Rose. Of magnificent form; white, with pale flesh center; petals very large, shell-shaped and of great substance; fragrant; foliage very large, dark green; a strong, vigorous grower. \$1.00.

"A most valuable addition to our white perpetuals, probably leaving all other white flowers in the background."—*Journal of Horticulture, London.*

A correspondent of the London (Eng.) *Garden* says: "It is by far the best white H. P. Rose in commerce."

Awarded gold medal of the National Rose Society of England, and six first class certificates.

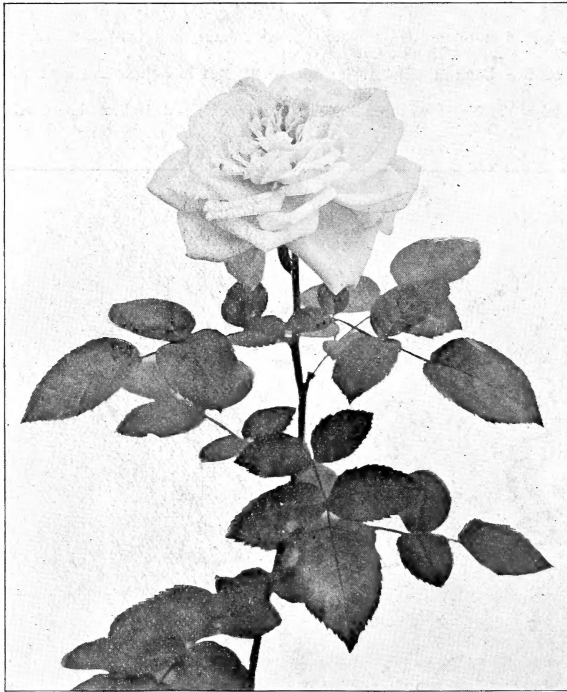


NEW WHITE H. P. ROSE, 'MARGARET DICKSON.' (Reduced.)

**New H. P. Rose, "Marchioness of Londonderry."**

Another new White Hybrid Perpetual, and one of the late introductions of Messrs. Dickson & Sons, of Newtownards, Ireland, who have given us such beautiful Roses as Earl of Dufferin, Margaret Dickson, etc. We append the originator's description:

"Flowers of great size, perfectly formed, and carried on stout stems. Color ivory white; petals of great substance, shell-shaped and reflexed; free flowering; highly perfumed; growth vigorous and foliage very fine, we may say mildew proof. Undoubtedly one of the finest we have yet raised." Awarded the gold medal at Crystal Palace, London. \$1.50.



NEW ROSE, "MARCHIONESS OF LONDONDERRY." (Reduced.)

### **Rosa Wichuraiana.**

*(The Japan Trailing Rose.)*

This pretty novelty is a native of Japan, and is a most valuable plant for covering embankments, rockeries, etc., and particularly for use in cemeteries. It is a low, trailing species, its stems creeping on the ground almost as closely as the Ivy. Foliage small, very dark green and lustrous; the flowers, which are produced in July, are single, pure white, resembling somewhat small White Anemone flowers and are very fragrant. A great acquisition. 50c.

"Its remarkable habit, its hardiness, the brilliancy of its lustrous foliage, and the beauty of its flowers, which appear when most shrubs are out of bloom, certainly recommend it to the attention of the lovers of hardy plants."—*Garden and Forest.*

### ✓ **New Hybrid Tea Rose, "Belle Siebrecht."**

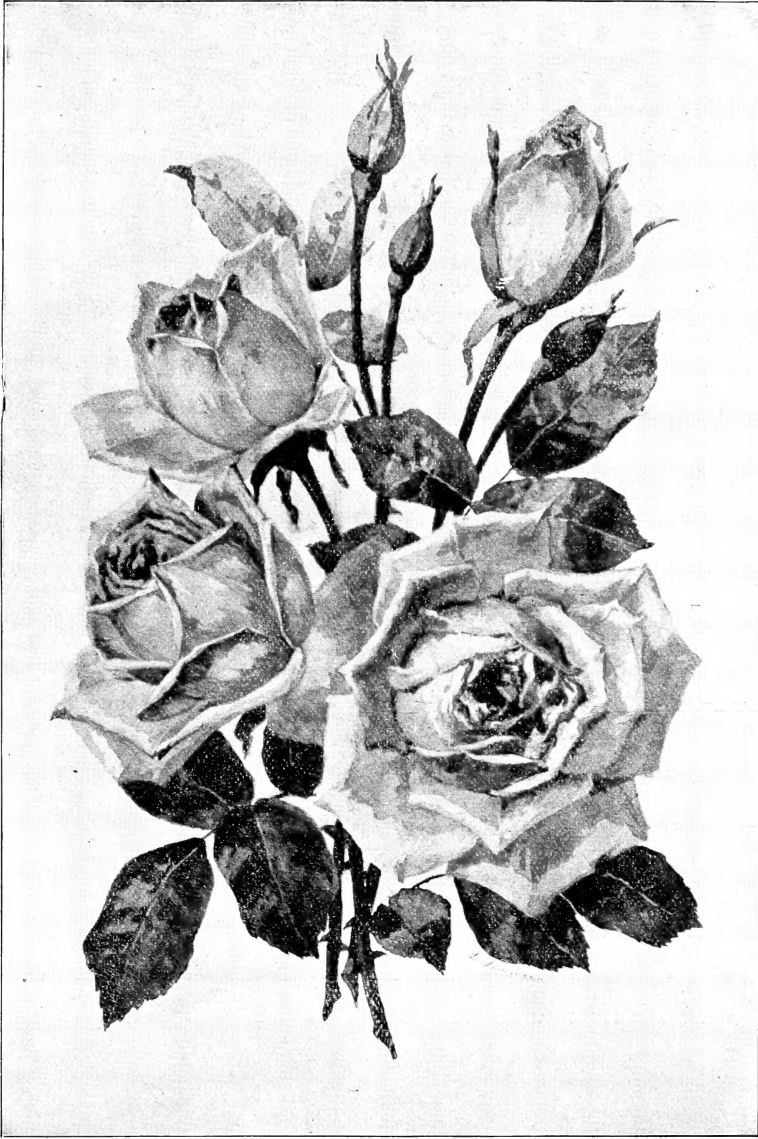
A new Rose, which comes highly recommended. Described as follows: "Color a solid pink of the richest shade, a rare color; flowers large, beautifully formed and long, tapering shape, with high center, and when half blown the petals reflex in a graceful manner; sweetly perfumed. A vigorous grower, with large glossy foliage of leathery texture. It is predicted by eminent rose growers that it will be the best forcing and the best selling rose that has ever been introduced." \$1.

### ✓ **New Hybrid Tea Rose, "Mrs. W. C. Whitney."**

A new American seedling Rose, said to be one of the greatest acquisitions ever introduced. Described as follows: Color beautiful shade of clear deep pink, with a fragrance distinct from any known variety. A strong, vigorous grower, producing large, full flowers; very free flowering. Awarded the "Mrs. Whitney Cup" at Madison Square Garden, New York, in 1892. \$1.00.

**Hybrid Rugosa Rose, Mme. G. Bruant.**

One of the best Roses of recent years. In the bud state the flowers are long and pointed, when open, semi-double; pure white and fragrant, and produced freely in clusters at intervals throughout the Summer. *Exceptionally hardy and vigorous.* 50c.



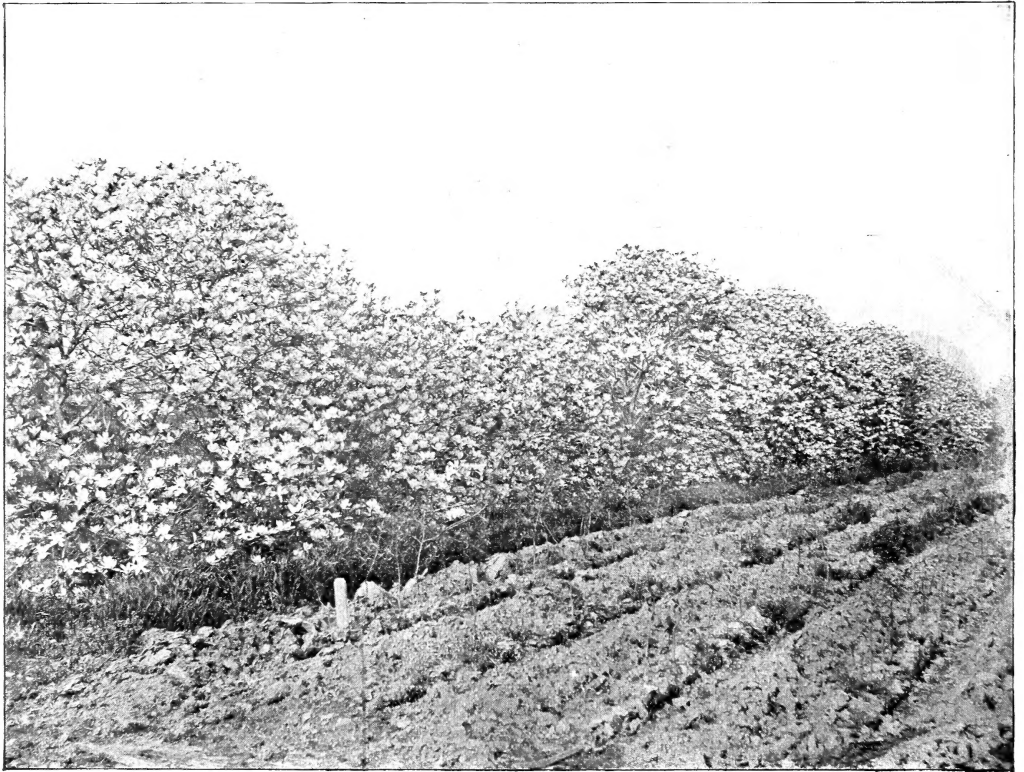
NEW PEDIGREE HYBRID TEA ROSE, "BELLE SIEBRECHT."

✓ **New Tea Rose, Maman Cochet.**

A new Tea Rose which has proved to be an acquisition. Flowers large, full, clear carmine rose, shaded with salmon yellow. Plant very vigorous and free flowering. 50c.

✓ **New Tea Rose, Beaute Inconstante.**

A decided novelty, producing flowers varying in color from coppery red to different shades of orange and yellow; very fragrant. Plant strong and vigorous. 50c.



A ROW OF CHINESE MAGNOLIAS IN FULL BLOOM AT THE MT. HOPE NURSERIES.